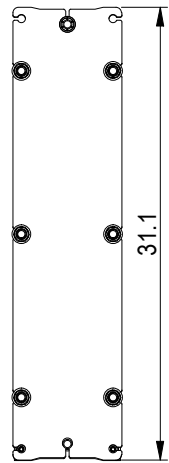
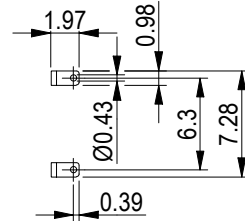
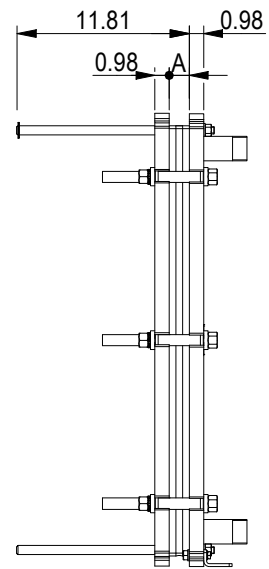


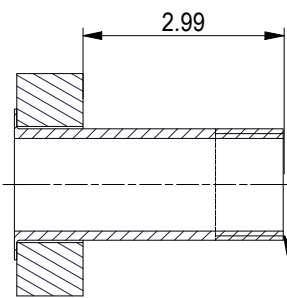
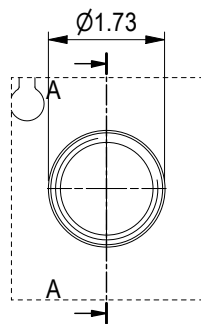
**PRESSURE PLATE**  
(MOVABLE)



Space between pressure plate and supporting column should be kept free from fixed installations!



ASME B1.20.1 - 1 1/4-11.5 NPT, ALLOY 316, 101 mm  
S1, S2, S3, S4 A-A:



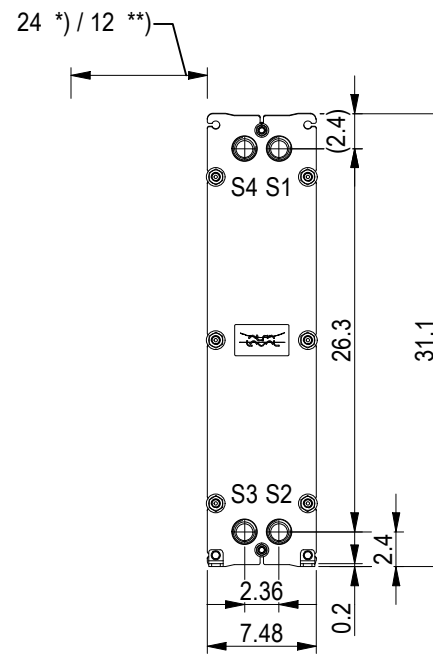
ASME B1.20.1 - 1 1/4-11.5 NPT

NO. OF UNITS

1

null GPM  
null GPM

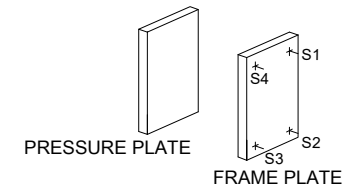
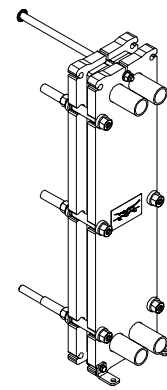
**FRAME PLATE**



\*) Recommended free space for opening and closing to be applied on both sides

\*\*) Free space can be reduced to this distance on one of the sides

All dimensions in inches



|                          |              |
|--------------------------|--------------|
| APPROX. OUTER DIMENSIONS |              |
| LENGTH                   | 12.2 in      |
| WIDTH                    | 7.9 in       |
| HEIGHT                   | 31.5 in      |
| APPROX. WEIGHTS          |              |
| NET WEIGHT, EMPTY        | 145 lb       |
| WEIGHT FULL OF WATER     | 151 lb       |
| PLATE MATERIAL           | ALLOY 316    |
| PLATE THICKNESS          | 0.5 mm       |
| GASKET                   | NBRP Clip-on |

CHANNEL ARRANGEMENT 1\*9 ML / 1\*10 MH



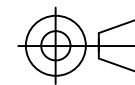
www.alfalaval.com

DRAWING  
GASKETED PLATE HEAT EXCHANGER

**TL3-BFG**

ASME  
Code Section VIII Div.1

MAWP 145 psi at 150.1 °F  
MDMT 32.0 °F at 145 psi  
Designed and constructed in accordance with the 2019 ASME Code.



8240171411  
TL3-BFG, 20 plates

Do not use this drawing for foundation bolting or piping layout

DATE 6/1/22  
REVISION 0